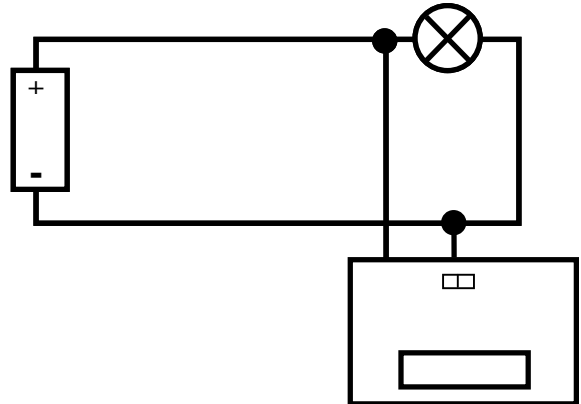


Dual Bench Meter

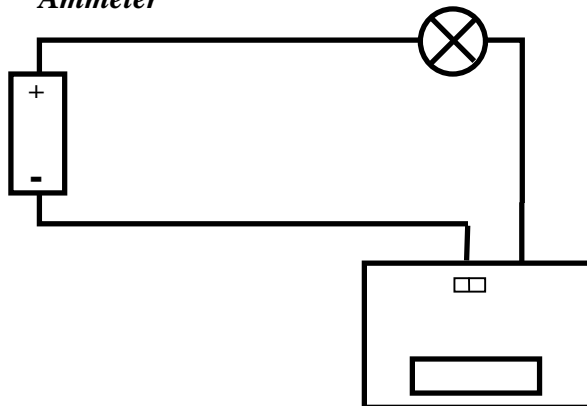
The meter may be used as either a 0-19.99V dc voltmeter or a 0-10A dc ammeter. The internal PP3 battery is switched off with the selector slide switch in the centre position.

Voltmeter

The slide switch should be moved to the left and the black and red sockets used to make the connections - red for positive and black for negative. The meter should be wired in parallel.



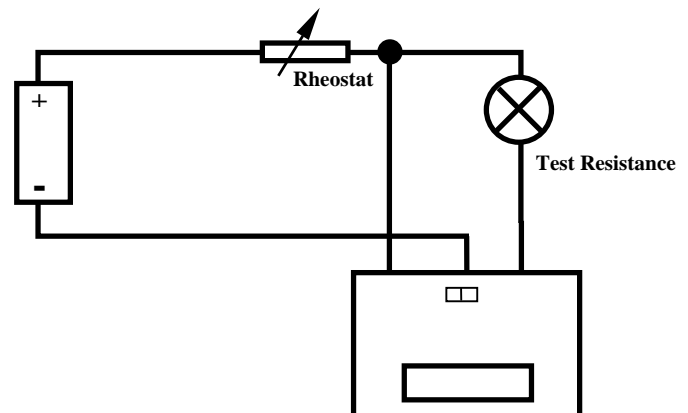
Ammeter



The slide switch should be moved to the right and the brown and black sockets used to make the connections - brown for positive and black for negative. The meter should be wired in series.

Dual Wiring

By careful positioning of the meter in the circuit, it is possible to alternately read voltage and current by flicking the selector switch, e.g. when producing a V/I curve.



Battery Replacement

Access to the battery is gained by undoing the four screws on the base and removing the base panel. The battery should be replaced with either a Zinc Chloride or Alkaline Manganese type PP3.