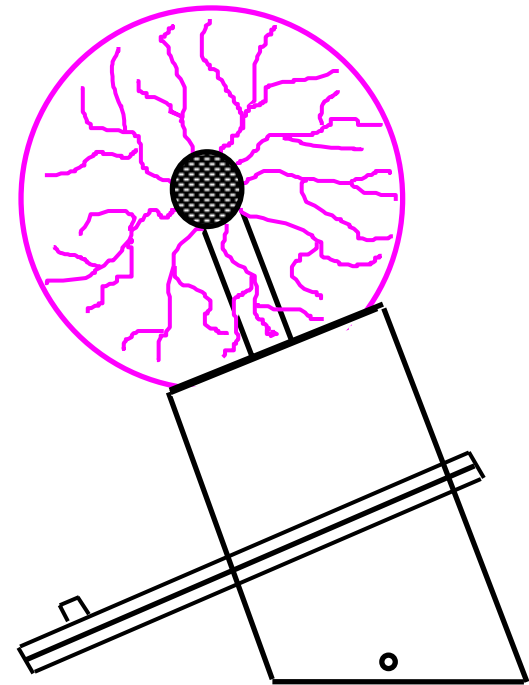


Fantasia

The Plasma Spheres of IMAGINARIUM



OWNER'S MANUAL

MAINTENANCE PRECAUTIONS
CAUTION
RISK OF ELECTRIC SHOCK
DO NOT OPEN

REGULATORY INFORMATION

- Your Fantasia please remain wide your eyes of fascination. To keep it in good condition, following:
- Do not place it unit to overheat. Allow adequate ventilation around radiator or heat system or near a fireplace.
- Always unplug the unit when cleaning the glass globe. You should be applied with a soft, clean cloth.

WARNING: This equipment generates and uses radio frequency energy and if not installed and used properly, i.e. in strict accordance with the operating instructions, reference manuals, and the service manual, may cause interference to radio or television reception. It has been tested and found to comply with the limits for a Consumer Product ISM/RF Lighting Device pursuant to Subparts A and B of Part 18 of FCC Rules, which are designed to provide reasonable protection against such interference when operated in a residential installation.

CAUTION: TO REDUCE THE RISK OF ELECTRIC SHOCK DO NOT OPEN BASE OF PRODUCT.
NO USER-SERVICEABLE PARTS INSIDE.
DO NOT ATTEMPT TO REMOVE GLASS SPHERE.
REFER SERVICING TO QUALIFIED SERVICE PERSONNEL.

If this equipment does cause interference to radio or television reception, which can be determined by turning the equipment off and on, the user is encouraged to try to correct the interference by one or more of the following measures:

• Clean the base housing with a soft, slightly dampened clean cloth. Do not use abrasive cleaner. Before cleaning, make sure the power is turned off and the AC plug disconnected. Never immerse the unit in water.
 • Do not plug into a power source other than 220V AC 50Hz electrical outlet. If the system is not going to be used for extended periods of time, unplug from the power source.

1. Re-orient the receiving antenna.
2. Relocate the equipment with respect to the receiver.
3. Move the equipment away from the receiver.
4. Plug the equipment into a different outlet so that equipment and receiver are on different branch circuits.

- Keep liquids and ornamental objects from coming in contact with the glass sphere.
- Keep the unit away from Co The lightning flash within a triangle is intended to alert the user to the presence to uninsulated "dangerous voltage" within the product enclosure that may be of sufficient magnitude to constitute a risk of electric shock to persons.
- Keep the unit out of reach of

Bring alive the lightning within the Fantasia.....

- Multi-coloured bolts of living lightning captured within a glass sphere
- Variabl lter the intensity at the turn of a dial
- Touch t nd the lightning is "magically" drawn to your fingertips
- The 'Voice' feature allows the display to be controlled by the sound of your voice or to music
- Fantasia d in the same design studios as the gallery editions costing several times more

If necessary, consult your dealer service representative for additional suggestion. The user may find the following booklet prepared by the Federal Communications Commission helpful: 'How to identify and Resolve Radio TV Interference Problems'. This booklet is available from the U.S. Government Printing Office, Washington, DC 20402 Stock No. 004-000-00345-4 (FCC. Part 15.838 b).

The manufacturer is not responsible for any radio or TV interference caused by unauthorised modifications to this equipment. It is the responsibility of the user to correct such interference.

CAUTION: For continued protection against fire, replace fuse with only the same type and rating of fuse.
 So now that you've experienced a great high-tech gift sensation which is finally available at an affordable price, don't wait. Hurry down to your store and share this delight with your friends.
WARNING: To prevent fire or shock hazard, do not expose this unit to rain or moisture.

IMPORTANT SAFETY INSTRUCTIONS

1. Read instructions - all the safety and operating instructions should be read before the appliance is operated.
2. Retain Instructions - the safety and operating instructions should be retained for future reference.
3. Heed Warnings - all warnings on the appliance and in the operating instructions should be adhered to.
4. Follow Instructions - all operating and use instructions should be followed.
5. Cleaning - unplug this product from the wall outlet before cleaning. Do not use liquid cleaners or aerosol cleaners. Use a damp cloth for cleaning.
6. Attachments - do not use attachments not recommended by the product manufacturer as they may cause hazards.
7. Water and Moisture - do not use this product near water - for example, near a bath tub, wash bowl, kitchen sink, or laundry tub, in a wet basement, or near a swimming pool, and the like.
8. Accessories - Do not place this product on an unstable cart, stand, tripod, bracket, or table. The product may fall, causing serious injury to a child or adult, and serious damage to the appliance.
9. Ventilation - Slots and openings in the cabinet are provided for ventilation and to ensure reliable operation of the product and to protect it from overheating, and these openings must not be blocked or covered. The openings should never be blocked by placing the product on a bed, sofa, rug, or other similar surface. This product should never be placed near or over a radiator or heat register. This product should not be placed in a built-in installation such as a bookcase or rack unless proper ventilation is provided or the manufacturer's instructions have been adhered to.
10. Power Sources - this product should be operated only from the type of power source indicated on the marking label. If you are not sure of the type of power supply to your home, consult your appliance dealer or local power company.
11. Power Cord Protection - power supply cords should be routed so that they are not likely to be walked on or pinched by items placed upon or against them, paying particular attention to cords at plugs, convenience receptacles, and the point where they exit from the appliance.

1. INTENSITY

The Rotary control labelled 'intensity' enables you to vary the intensity of the Fantasia display. By turning the control clockwise, the intensity of the display will become more powerful.

2. TOUCH

The Fantasia responds to your touch. The display will be attracted to your hand as it nears and then touches the sphere. You may feel a slight tingling sensation which is caused by the vibrations of the glass as the electrons strike the dazzling light display.

Touch the glass only with your hands. Do not touch glass with metal objects. Do not touch the glass with wet hands.

3. VOICE ACTUATE

Turn the INTENSITY control anti-clockwise to low end to enable the 'Voice Actuate' feature.

The 'Voice Actuate' feature allows the display to be controlled by the sound of your voice or to music. You can talk to the sphere and it will response with the dazzling light display.



12. Lightning - for added protection for this product during a lightning storm, or when it is left unattended and unused for long periods of time, unplug it from the wall outlet. This will prevent damage to the product due to lightning and power-line surges.
13. Overloading - do not overload wall outlets and extension cords as this can result in a risk of fire or electric shock.
14. Object and Liquid Entry - never push objects of any kind into this product through openings as they may touch dangerous voltage points or short-out parts that could result in a fire or electric shock. Never spill liquid of any kind on the product.
15. Servicing - do not attempt to service this product yourself as opening or removing covers may expose you to dangerous voltage or other hazards. Refer all servicing to qualified service personnel.
16. Damage Requiring Service - unplug this product from the wall outlet and refer servicing to qualified service personnel under the following conditions:
 - A. When the power-supply cord or plug is damaged.
 - B. If liquid has been spilled, or object have fallen into the product.
 - C. If the product has been exposed to rain or water.
 - D. If the product does not operate normally by following the operating instructions. Adjust only those controls that are covered by the operating instructions as an improper adjustment of other controls may result in damage and will often require extensive work by a qualified technician to restore the product to its normal operation.
 - E. If the product has been dropped or the cabinet has been damaged.
 - F. When the product exhibits a distinct change in performance - this indicates need for service.
17. Replacement Parts - when replacement parts are required, be sure the service technician has used replacement parts specified by the manufacturer or have the same characteristics as the original part. Unauthorised substitutions may result in fire, electric shock or other hazards.
18. Safety Check - upon completion of any service or repairs to this product ask the service technician to perform safety checks to determine that the product is in proper operating condition.



Congratulations on becoming an owner of 'Fantasia'. You are now experiencing the 'Fourth State of Matter'. It is vital to confine your fascination and spare a few minutes to read this manual before plugging in your Fantasia.

THE IDEA BEHIND FANTASIA

The mystery and wonder that is the Cosmos surrounding us has been captured in the form of a living kinetic sculpture that holds a mystical fascination for all who come in contact with it.

Behold... FANTASIA, the triumphal merging of the technologist's science with the artist's vision. Lightning-like tentacles whirl and dance as if to a magical sorcerer's chant. They respond to your voice or touch as you assume command of the electrified choreography. The sense of wonder and fascination remains unchallenged by any art form in the history of man.

The miracle of plasma physics lies at the heart of this marvellous device. PLASMA, the unquantifiable, sometimes referred to as the 'Fourth State of Matter' plasma, the same gaseous-like form of which our Sun is comprised. The rare and delicate blend of inert gases within the sculpture combine to form a plasma chain that is at once spellbinding and startling. The sculpture inspires a sense of bewitching strangeness. The experience is unique and the impact total.

POWER INTENSITY

THE PRINCIPLE OF FANTASIA

The outer sphere of Fantasia contains a secret mixture of safe, rare gases which is used to create the brilliant, colourful flashes of light and to ensure their lasting quality.

The inner sphere of Fantasia radiates energy into the rare gas atmosphere. This energy breaks electrons loose from the gas atoms, releasing more energy which we see as light. These free electrons are affected by the energy field around the sphere. When you place your hand near or on the glass, you create interference which can sculpt the plasma, and the lightning is 'magically' drawn to your fingertips.

OPERATION

SPECIFICATIONS

To begin operation of your Fantasia press the button to 'ON'.

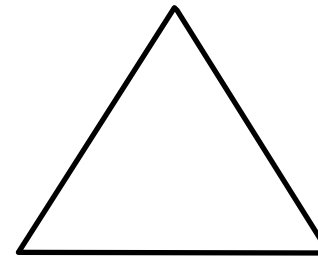
Power Source: AC ~ 220V 50Hz
Power consumption: 40 Watts maximum
Specifications subject to change without notice.

TO UNPACK

Caution: This equipment is made of glass. Use extreme care in unpacking to avoid breakage or injury.

Complete and mail the enclosed Warranty Registration postcard. Retain the packing carton and protective foam trays for future shipping or storage.





IMPORTANT

If glass sphere is broken, repack and return to store - do not plug in unit or attempt to operate it.

SETTING UP

Place your Fantasia anywhere in your home or office. For greatest enjoyment, select a location where the room light can be lowered. The intensity of Fantasia's brilliant lightning flashes can best be appreciated in a dimly lit environment.

Plug the power cord into any power outlet. Press 'on' button and.....

- multi-coloured bolts of living lightning captured within a glass sphere
- variable controls alter the intensity at the turn of a dial
- touch the sphere and the lightning is 'magically' drawn to your fingertips
- the 'voice-actuate' feature allows the display to be controlled by the sound of your voice or to music